

**STEAKBOX**

FOOD SERVICE

CATALOGUE 2025

[www.steakboxfoodservice.co.uk](http://www.steakboxfoodservice.co.uk)

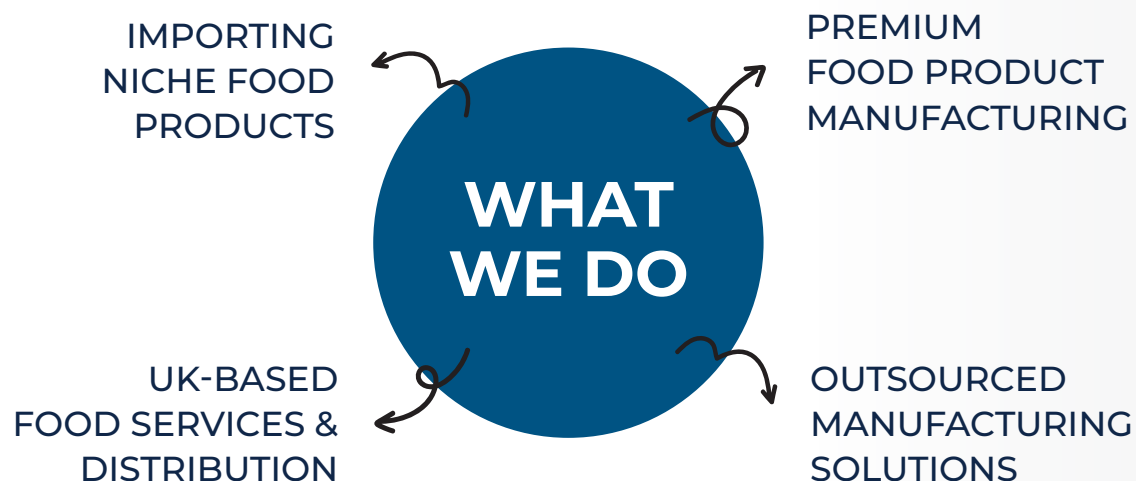
# WHAT'S INSIDE ?

- 4 BREAKFAST
- 5 CHAI
- 6 BREAD, BUN & ROLL
- 7 BURGERS
- 8 CHEESE & VEGAN
- 9 BREADED CHICKEN
- 10 BREADED SEAFOOD
- 11 FRIES AND SIDES
- 12 STEAKS & FRESH MEAT
- 13 SAUCES
- 16 BREADINGS
- 17 BASTES & MARINADES
- 18 CHIP SALT, SEASONINGS
- 20 COOKING OILS & FATS
- 21 EXTRAS, DESSERTS
- 22 DRINKS
- 23 HYGIENE ESSENTIALS, PACKAGING



## ABOUT US

STEAKBOX FOOD SERVICE is a leading food service company dedicated to delivering exceptional quality, trust and best in class services. Established in 2021, we have been working relentlessly behind some of the biggest names in the food industry.



## OUR VALUES



QUALITY



CUSTOMER-CENTRIC  
APPROACH



INNOVATION

## WHY CHOOSE US

- 20 YEAR EXPERIENCE IN FOOD INDUSTRY
- RELIABILITY • UNMATCHED SATISFACTION
- HIGH QUALITY

## CONTACT US

0800 002 5786

[admin@steakboxfoodservice.co.uk](mailto:admin@steakboxfoodservice.co.uk)

[www.steakboxfoodservice.co.uk](http://www.steakboxfoodservice.co.uk)

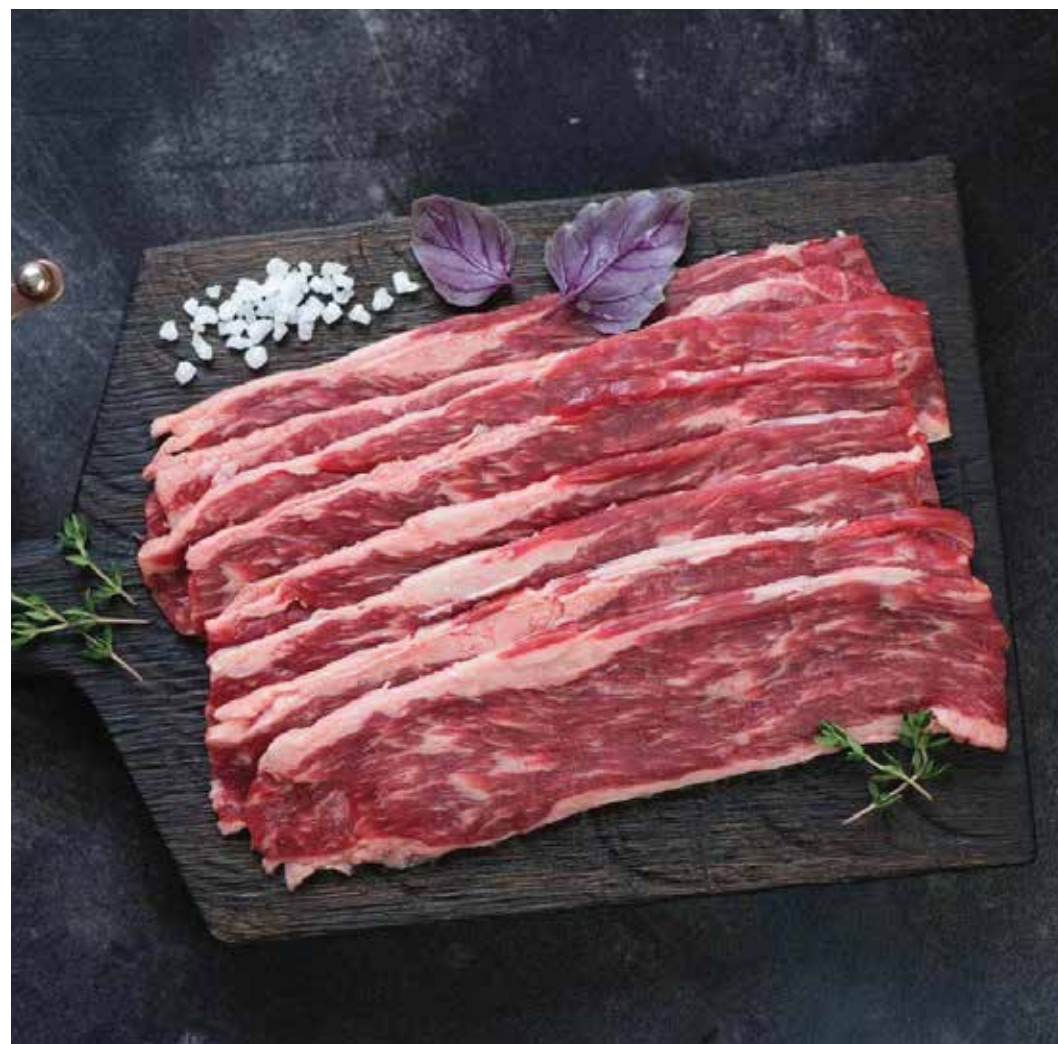
Visit us at [www.steakbox.co.uk](http://www.steakbox.co.uk) to learn more about how we can serve you.  
We'd love to be part of your journey.



# BREAKFAST



CODE	DESCRIPTION	WEIGHT
BKF01	HMC SMOKED CHICKEN RASHERS (10 X 300G)	3 KG
BKF02	HMC SMOKED TURKEY RASHERS (10 X 300G)	3 KG
BKF03	HMC SMOKED BEEF RASHERS (10 X 300G)	3 KG
BKF04	HMC BEEF HOT DOGS (5 X 1KG)	5 KG
BKF05	HMC CHICKEN SAUSAGES (8S)(100PCS)	5.2 KG
BKF06	HMC BEEF SAUSAGES (8S)(100PCS)	5.2 KG
BKF07	BREAKFAST CHICKEN SAUSAGE PATTIES (48 PCS)	3 KG
BKF87	KARA ENGLISH BREAKFAST MUFFINS	48 PCS





# CHAI



CODE	DESCRIPTION	WEIGHT
T01	PLAIN KARAK CHAI	1KG
T02	CARDAMOM KARAK CHAI	1KG
T03	MASALA KARAK CHAI	1KG
T04	GINGER KARAK CHAI	1KG
T05	LEMONGRASS GINGER CHAI	1KG
T06	KASHMIRI PINK CHAI	1KG
T07	CAPPUCCINO	1KG
T08	HOT CHOCOLATE	1KG
T09	SUGARFREE KARAK CHAI	500G
T10	SUGARFREE CARDAMOM CHAI	500G
T11	SUGARFREE MASALA CHAI	500G
T12	ASSAM LEAF TEA	250G
T13	MASALA LEAF TEA	250G
T14	CARDAMOM LEAF TEA	250G
T15	BOLERO 11 CHAI MACHINE	1 X FLAVOUR
T16	BOLERO 21 CHAI MACHINE	2 X FLAVOUR
T17	BOLERO 32 CHAI MACHINE	3 X FLAVOUR
T18	BOLERO 43 CHAI MACHINE	4 X FLAVOUR



# BREAD, BUNS & ROLLS

CODE	DESCRIPTION	WEIGHT
BBR01	AMERICANA 4" UNSEEDED BUN	1X48PC
BBR02	AMERICANA 4" DOUBLE CUT BUN	1X48PC
BBR03	AMERICANA 4" SEEDED BUN	1X48PC
BBR04	AMERICANA 4.5" SEEDED BUN	1X48PC
BBR05	SB PREMIUM 4" UNSEEDED BUN	1X60PC
BBR06	SB PREMIUM 4" DOUBLE CUT BUN	1X30PC
BBR07	SB PREMIUM 4.5" SEEDED BUN	1X30PC
BBR08	FRESH BAKERY PREMIUM GLAZED UNSEEDED BUNS (SLICED)	1X50PC
BBR09	FRESH BAKERY PREMIUM GLAZED SEEDED BUNS (SLICED)	1X50PC
BBR10	AMBIENT 12" TORTILLA WRAPS	10×10
BBR11	12" SPINACH TORTILLA	4X18
BBR12	AMBIENT 10" TORTILLA WRAPS	10×10
BBR13	TASTY BAKE LARGE PITTA BREAD	9X8
BBR14	6" ROUND PITTA BREAD	
BBR15	MARTIN'S 3.5" POTATO ROLLS	5X20
BBR16	MARTIN'S 4" POTATO ROLLS	5X12
BBR17	MARTIN'S 4" BIG MARTY'S	6X8
BBR18	MARTIN'S HOAGIE ROLLS	6X6
BBR19	MARTIN'S 5" POTATO ROLLS	4×8
BBR20	MARTIN'S 3" SLIDER BUNS	7X12
BBR21	MARTIN'S TOP-SLICED LONG ROLLS	8X9
BBR22	MARTIN'S TEXAS TOAST	8X12 SLICES
BBR23	KARA ENGLISH BREAKFAST MUFFINS	48PCS





# BURGERS

OUR BURGERS ARE 100% BEEF



CODE	DESCRIPTION	WEIGHT
BGR01	HMC 45G CHEESEBURGER (150PCS)	6.75 KG
BGR02	HMC 90G WHOPPER BURGER (48 PCS)	4.32 KG
BGR03	HMC QUARTER POUNDER BURGER (113G) (COMING SOON)	
BGR04	HMC 6OZ (170G) GOURMET BURGER (40PCS)	5.8KG
BGR05	HMC 2OZ ANGUS SMASH BURGER (150 PCS)	8.55 KG
BGR06	HMC 2OZ PRIME BEEF SMASH BURGER (150 PCS)	8.55 KG
BGR07	HMC 3OZ ANGUS SMASH BURGER (84PCS)	7.14 KG
BGR08	HMC 3OZ PRIME BEEF SMASH BURGER (84 PCS)	7.14 KG
BGR09	HMC SLOW COOKED SMOKED BLACK ANGUS BRISKET	2.5 KG
BGR10	HMC PHILLY CHEESE STEAK (RIBEYE)	1 KG
BGR11	PREMIUM HAKE FISH BURGER FILLET	8 X 1 KG
BGR12	HALAL BUTTERMILK BREADED CHICKEN FILLETS	10 KG
BGR13	HALAL KFC ZINGER CHICKEN FILLETS (96PCS X 120G)	11.92 KG
BGR14	HALAL KFC ORIGINAL CHICKEN FILLET (36PC X 120G)	4.32 KG
BGR15	HMC HOT & SPICY BREADED BREAST FILLET (120-150G)	6 X 1020G
BGR16	HMC PERI PERI BREADED BREAST FILLETS (120-130G)	3 X 960G
BGR17	HMC SOUTHERN FRIED BREADED BREAST FILLETS (120-130G)	3 X 960G
BGR18	HMC HOT N FIERY BREADED BURGER (85G)	8 X 700G
BGR19	HMC SPICY BEAN BURGER (100G X 24PC)	2.4KG
BGR20	HMC MCCAINS CLASSIC VEGETABLE BURGER	3.39KG
BGR21	AVIKO VEGETABLE BURGER (113G X 30PCS)	3.39 KG
BGR22	FALAFEL BURGER	2 X 1.4KG





# CHEESE, VEGAN



CODE	DESCRIPTION	WEIGHT
CHS01	KERRYMAID BURGER CHEESE SLICES	112 SLICES
CHS02	WHITE RED MIX GRATED CHEESE	5X2KG
CHS03	MACPHIE CHEDDAR CHEESE SAUCE	1LTR
CHS04	MACPHIE NACHO CHEESE SAUCE	1LTR
CHS05	MONTEREY JACK SLICES	6X1KG
CHS06	GRATED MONTEREY JACK CHEESE	5X2KG

## VEGAN

CODE	DESCRIPTION	WEIGHT
VGN01	CRISPY VEGAN JACKFRUIT WINGZ	4 X 14PCS
VGN02	VEGAN FRIED CHICKEN SPICY FILLETS	3 X 1KG
VGN03	MEATLESS ORIGINAL BURGERS	22 X 114G
VGN04	FRIED RIPE PLANTAIN SLICE BIAS CUT	20 X 500G
VGN05	FALAFEL BURGER	2 X 1.4KG
VGN06	FALAFEL STIX	2 X 1.5KG
VGN07	FALAFEL ORIGINAL	2 X 1.5KG





# BREADED CHICKEN



CODE	DESCRIPTION	WEIGHT
BC01	HMC CRISPY BATTERED NUGGETS	6 X 1KG
BC02	HMC CRISPY BATTERED CHICKEN STEAKS	6 X 1020G
BC03	HMC HOT & SPICY BREADED BREAST FILLET BURGER	6 X 1020G
BC04	HMC HOT & SPICY BITES	12 X 500G
BC05	HMC HOT & SPICY MINI FILLETS STRIPS	6 X 900G
BC06	HMC HOT & FIERY BREADED FILLET BURGER	8 X 700G
BC07	HMC SF BREADED BREAST FILLET BURGER	3 X 960G
BC08	HMC SF BREADED BITES	12 X 500G
BC09	HMC SF BREADED MINI FILLET STRIPS	6 X 950G
BC10	HMC HOT & SPICY BREADED WINGS	6 X 950G
BC11	HMC HOMETYLE MINI BREAST FILLET STRIPS	3 X 900G
BC12	HMC PLAIN BREADED SHOTS	3 X 950G
BC13	HMC PP BREADED BREAST FILLETS	3 X 1KG
BC14	HMC PP BREADED BITES	12 X 500G
BC15	HMC PP BREADED MINI FILLETS STRIPS	12 X 500G
BC16	HMC PREMIUM KRISPY BREADED CHICKEN FILLETS	3 X 945G
BC17	HALAL PREMIUM BREAST FILLET CHICKEN CHUNKS	1KG
BC18	HALAL PREMIUM INNER FILLET CHICKEN GOUJONS	1KG
BC19	HALAL BUTTERMILK BREADED CHICKEN FILLETS	80-88 PC X 120G
BC20	HALAL KFC ZINGER CHICKEN FILLET	96PC X 120G
BC21	HALAL KFC ORIGINAL CHICKEN FILLET	36PC X 120G





# BREADED SEAFOOD



CODE	DESCRIPTION	WEIGHT
BS01	PANKO BREADED FISH NUGGETS	4 X 1KG
BS02	PANKO CRUNCY BREADED PRAWNS	15 X 300G
BS03	BATTERED SQUID RINGS	8 X 1KG
BS04	BREADED SQUID STRIPS	5 X 1KG
BS05	BATTERED SHRIMPS	8 X 1KG
BS06	BATTERED HAKE FINGERS	4 X 1KG
BS07	ATLANTIC SALMON FILLETS	30 X 180G
BS08	TIGER SHRIMP SKEWERS	(10-12 PCS) 10 X 1KG
BS09	GARLIC MARINATED KING PRAWNS	10 X 1KG
BS10	PREMIUM HAKE FISH BURGER FILLET	8 X 1KG





# FRIES & SIDES



CODE	DESCRIPTION	WEIGHT
FS01	LUTOSA CRINKLE CHIPS	4X2.5KG
FS02	LAMB WESTON POTATO PUFFS	10X1KG
FS03	LAMB WESTON ONION RINGS	6X1KG
FS04	LAMB WESTON CHILLI CHEESE NUGGETS	6X1KG
FS05	LAMB WESTON MOZZRELLA STICKS	6X1KG
FS06	LAMB WESTON CREAMY JALAPENO	6X1KG
FS07	LAMB WESTON SEASONED TWISTER	4X2.5KG
FS08	LAMB WESTON SWEET POTATO FRIES	4X2.5KG
FS09	LAMB WESTON F62 FRIES	4X2.5KG
FS10	LAMB WESTON F64 FRIES	4X2.5KG
FS11	LAMB WESTON WAFFLE FRIES	4x2.5KG
FS12	LAMB WESTON HASHBROWN TRIANGLES	4x2.5KG
FS13	LAMB WESTON SEASONED WEDGE	4X2.5KG
FS14	LAMB WESTON SWEET POTATO FRIES	4X2.5KG
FS15	MCCAIN (3/8) THIN CUT FRIES	4X2.27KG
FS16	MCCAIN SURECRISP (3/8) THIN CUT FRIES	4X2.27KG
FS17	MCCAIN SWEET POTATO FRIES	4X2.25KG
FS18	MCCAIN SURECRISP THIN CUT 3/8 SKIN-ON FRIES	4X2.27KG
FS19	MCCAIN SURECRISP SKIN-ON JULIENNE EXTRA THIN FRIES	4X2.27KG
FS20	AVIKO MAC & CHEESE TRAIANGLES	6X1KG
FS21	FLAMES FALAFEL (30G)	2X50PCS
FS22	BREADED HALLOUMI FRIES	1KG
FS23	MACARONI & CHEESE BITES	6X1KG
FS24	CAJUN BATTERED ONION RINGS	6X1KG
FS25	CHEESY ONION RINGS	1KG



# STEAKS & FRESH MEAT



CODE	DESCRIPTION		
STK01	BLACK ANGUS BRISKET		
STK02	BLACK ANGUS RIBEYE		
STK03	BLACK ANGUS CHUCK WHOLE		
STK04	BLACK ANGUS FILLET MIGNON		
STK05	BLACK ANGUS FLAT IRON		
STK06	BLACK ANGUS LMC		
STK07	ANGUS KNUCKLE		
STK08	BLACK ANGUS PICAHNA		
STK09	BLACK ANGUS PORTERHOUSE		
STK10	BLACK ANGUS T-BONE		
STK11	BLACK ANGUS SHORT RIBS		
STK12	KOREAN CUT (FLANKEN) RIB STRIPS		
STK13	BLACK ANGUS TOMAHAWK		
STK14	BLACK ANGUS TOP SIDE		
STK15	BLACK ANGUS MARGUEZ SAUSAGES		
STK16	BLACK ANGUS BEEF RASHERS		
STK17	BLACK ANGUS CHUCK STEWING/PIE CUBES		
STK18	BLACK ANGUS BEEF RUMP (UNSLICED)		
STK19	BLACK ANGUS BEEF RUMP MINUTE STEAK		
STK20	BLACK ANGUS 4OZ BEEF BURGERS		
STK21	BLACK ANGUS 5OZ BEEF BURGERS		
STK22	BLACK ANGUS 6OZ BEEF BURGERS		
STK23	BLACK ANGUS 2OZ BEEF PUCKS GAS SEALED		
STK24	BLACK ANGUS 3OZ BEEF PUCKS GAS SEALED		
STK25	BEEF FAT		
STK26	BEEF BONES		
LB01	LAMB RIBS	FM03	FLAT CHICKEN WINGS
LB02	LAMB SHANK	FM04	MIXED CHICKEN WINGS
LB03	LAMB CHOPS (MUTTON)	FM05	2 JOINT WINGS (SKIN ON)
LB04	LAMB CHOPS (BABY)	FM06	HALAL A5 GRADE WAGYU STEAK
FM01	FRESH CHICKEN BREAST FILLET 120G		
FM02	PRIME CHICKEN WINGS		



# SAUCES



## NAWHAL'S SAUCES

CODE	DESCRIPTION
NL01	ALGERIENNE
NL02	AMERICAINE EXTRA
NL03	ANDALOUSE SUPREME
NL04	BARBECUE
NL05	BIGGY BURGER
NL06	BLANCHE AUX CONCOMBRES
NL07	BRAZIL
NL08	BUFFALO TASTY GRILL
NL09	CHILI-THAI
NL10	FISH TO FISH
NL11	KETCHUP EXTRA
NL12	MAGIC ONION
NL13	MAROCAINE
NL14	MAYONNAISE EXTRA
NL15	MIAMI
NL16	PILI PILI ITALIENNE
NL17	PITA KEBAB
NL18	POIVRE
NL19	RASTA KI FREE
NL20	SAMURAI SUPREME
NL21	TARTARE SUPREME
NL22	TUNISIENNE

SIZE: TUBBIES 12 X 950 ML



CODE	DESCRIPTION
NL23	ALGERIENNE
NL24	AMERICAINE EXTRA
NL25	ANDALOUSE SUPREME
NL26	BARBECUE
NL27	BIGGY BURGER
NL28	BLANCHE AUX CONCOMBRES
NL29	BRAZIL
NL30	CHILI-THAI
NL31	CURRY DE MADRAS
NL32	FISH TO FISH
NL33	MAGIC ONION
NL34	MAMMOUTH
NL35	MAROCAINE
NL36	MAYONNAISE EXTRA
NL37	MIAMI
NL38	PILI PILI ITALIENNE
NL39	PITA KEBAB
NL40	POIVRE
NL41	SAMURAI SUPREME
NL42	TARTARE SUPREME
NL43	TOMATO KETCHUP
NL44	TUNISIENNE

SIZE: TUBBIES 12 X 500 ML



CODE	DESCRIPTION
NL45	ALGERIENNE
NL46	ANDALOUSE SUPREME
NL47	BARBECUE
NL48	BIGGY BURGER
NL49	BLANCHE AUX CONCOMBRES
NL50	KETCHUP EXTRA
NL51	MAYO TRAITEUR
NL52	SAMURAI SUPREME

SIZE: BUCKETS 10 L

CODE	DESCRIPTION
NL53	ALGERIENNE
NL54	ANDALOUSE SUPREME
NL55	BARBECUE
NL56	BIGGY BURGER
NL57	BLANCHE AUX CONCOMBRES
NL58	KETCHUP EXTRA
NL59	MAGIC ONION
NL60	MAROCAINE
NL61	MAYONNAISE EXTRA
NL62	MIAMI
NL63	POIVRE
NL64	SAMURAI SUPREME

SIZE: SQUEEZE 350 ML



CODE	DESCRIPTION
NL65	ALGERIENNE
NL66	MAYONNAISE EXTRA
NL67	TOMATO KETCHUP
NL68	BIGGY BURGER
NL69	BARBECUE
NL70	SAMURAI SUPREME
NL71	BLANCHE AUX CONCOMBRES
NL72	ANDALOUSE SUPREME

SIZE: STICKS 10 ML

CODE	DESCRIPTION
NL73	ALGERIENNE
NL74	ANDALOUSE SUPREME
NL75	BARBECUE
NL76	BIGGY BURGER
NL77	BLANCHE AUX CONCOMBRES
NL78	BRAZIL
NL79	CHILI-THAI
NL80	FISH TO FISH
NL81	KETCHUP EXTRA
NL82	MAROCAINE
NL83	MAYONNAISE EXTRA
NL84	MIAMI
NL85	PITA KEBAB
NL86	POIVRE
NL87	SAMURAI SUPREME
NL88	TARTARE SUPREME
NL89	TOMATO KETCHUP

SIZE: BIBOX 2x51





## BLAZING PERI-PERI SAUCES

CODE	DESCRIPTION
BLZ01	MILD PERI PERI SAUCE
BLZ02	MEDIUM PERI PERI SAUCE
BLZ03	HOT PERI PERI SAUCE
BLZ04	EXTRA HOT PERI PERI SAUCE
BLZ05	LEMON & HERB PERI SAUCE
BLZ06	GARLIC & HERB PERI SAUCE
BLZ07	MANGO & LIME SAUCE

SIZE: 5LTR

BLZ08	BUFFALO WINGS SAUCE
BLZ09	VOLCANO WINGS SAUCE
BLZ10	HOT HOT WINGS SAUCE
BLZ11	SPICY BBQ WINGS SAUCE
BLZ12	KOREAN BBQ WINGS SAUCE
BLZ13	MANGO & HABANERO WINGS SAUCE

SIZE: 5KG

BLZ14	LOUISIANA DRY RUB
BLZ15	LEMON AND HERB DRY RUB
BLZ16	BUTTERMILK RANCH SAUCE

SIZE: 2.5KG, 2.5KG, 960ML

## BLAZING ORIENTAL SAUCES

CODE	DESCRIPTION
OTL01	BLACK BEAN ORIENTAL SAUCE
OTL02	KUNG PAO ORIENTAL SAUCE
OTL03	PAD THAI ORIENTAL SAUCE
OTL04	SICHUAN ORIENTAL SAUCE
OTL05	SWEET & SOUR ORIENTAL SAUCE
OTL06	SWEET CHILLI ORIENTAL SAUCE
OTL07	TERIYAKI ORIENTAL SAUCE

SIZE: 2 x 2.25KG

## CHICKEN BREADING

CODE	DESCRIPTION	WEIGHT
CB01	PREMIUM ORIGINAL	12.5 KG
CB02	EXTRA CRISPY PREMIUM	12.5 KG
CB03	EXTRA CRISPY H&S PREMIUM	12.5 KG
CB04	FIRE CRACKER SPICY DIP POWDER	1 KG
CB05	NASHVILLE BREADING & POWDER	1 KG

## PREMIUM SAUCES

CODE	DESCRIPTION	WEIGHT
PRS01	LIONS THAI SWEET CHILLI SAUCE	2 X 2.27L
PRS02	LIONS VERY HOT CHILLI SAUCE	2 X 2.27L
PRS03	LIONS BLUE CHEESE DRESSING	2 X 2.27L
PRS04	LIONS RANCH DRESSING	2 X 2.27L
PRS05	LIONS HONEY & MUSTARD DRESSING	2 X 2.27L
PRS06	HEINZ KETCHUP SACHET	200PCS
PRS07	HEINZ MAYO SACHET	200PCS
PRS09	HEINZ KETCHUP	2X4L
PRS10	CHILLI JAM	1.25KG
PRS11	FRENCH'S HAMBURGER RELISH	2.45KG
PRS12	CHIPOTLE BBQ CHILLI GLAZE	2.2L
PRS13	HOUSE OF LORDS BBQ SAUCE	2X3.78L
PRS14	HICKORY BBQ SAUCE	1X5L

## SEASONINGS

CODE	DESCRIPTION	WEIGHT
SNG01	BLAZING PERI PERI SALT	1X2.5KG
SNG02	ALL PURPOSE SEASONING	3X700G
SNG03	CAJUN SEASONING	1X550G
SNG04	CHILLI CORN CARNE SEASONING	1X2.5KG
SNG05	TACO SEASONING MIX	1X2.5KG



# BREADINGS

NORMAL & HOT



CODE	DESCRIPTION	WEIGHT
RP01	SOUTHERN FRIED CHICKEN BREADING	12.5KG
RP02	FAMOUS CHICKEN BREADING (KFC STYLE)	20KG
RP03	ONE STEP FC BREADING (HINT OF HEAT)	20KG
RP04	PREMIER LEMON PEPPER BREADING	20 KG
RP05	LIGHT & CRISPY SUPERIOR BREADING	12.5 KG
RP06	TWO-STEP BREADING + SEASONING POUCH	11KG + 12.58KG
RP07	HOT DOUBLE BREADER	12.5 KG
RP08	EX-HOT DOUBLE BREADER	12.5 KG
RP09	NASHVILLE V-HOT BREADER	12.5 KG
RP10	PREMIER SPICY BREADING	12.5 KG
RP11	PREMIER MIL-DIP	3 KG
RP12	PREMIER FISH MASALA	2 KG





# BASTES & MARINADES



CODE	DESCRIPTION	WEIGHT
RP13	PREMIER FISH MASALA	2 KG
RP14	CHICK PREP MARINADE (BRINE)	2.5KG
RP15	HOT & SPICY MARINADE	2 KG
RP16	PERI-PERI ORIGINAL BASE MARINADE	2 KG
RP17	SIGNATURE PERI- PERI BASE MARINADE	2 KG
RP18	PERI-PERI ORIGINAL BASE MARINADE	8 KG
RP19	SIGNATURE PERI- PERI BASE MARINADE	8 KG
RP19	PREMIER LEMON & HERB BASTE	2 KG
RP20	PREMIER MILD BASTE	2 KG
RP21	PREMIER HOT BASTE	2 KG
RP22	PREMIER EXTRA HOT BASTE	2 KG
RP23	PREMIER MANGO & LIME BASTE	2 KG
RP24	MANGO HABANERO BASTE	2 KG
RP25	GARLIC & HERB, BASTE	2 KG
RP26	PREGO MARINADE/BASTE	2 KG
RP27	SMOKEY BBQ, MARINADE/BASTE	2 KG
RP28	JAMAICAN JERK MARINADE/BASTE	2 KG
RP29	X-HOT BUFFALO MARINADE/BASTE	2 KG
RP30	RED THAI MARINADE/BASTE	2 KG
RP31	SMOKED PAPRIKA MARINADE/BASTE	2 KG
RP32	KATSU MARINADE/BASTE	2 KG
RP33	TERIYAKI MARINADE/BASTE	2 KG
RP34	SWEET & SOUR MARINADE/BASTE	2 KG
RP35	SPICY GARLIC MARINADE/BASTE	2 KG
RP36	TIKKA MARINADE/BASTE	2 KG
RP37	SPICY KOREAN BBQ MARINADE/BASTE	2 KG
RP38	HOT DIP SAUCE	2 KG



# CHIP SALT, SEASONINGS



CODE	DESCRIPTION	WEIGHT
RP42	USA CHIP SPICE	2 KG
RP49	CAJUN SEASONING	2 KG
RP50	LEMON PEPPER CHIP SALT	2 KG
RP51	PERI-PERI FRIES SALT	2 KG
RP52	PERI-PERI CHIP SALT	2 KG
RP53	SMOKEY BBQ SEASONING	2 KG
RP54	CHEESY NACHO SEASONING	2 KG
RP55	SWEET CHILLI SEASONING	2 KG

## NASHVILLE V-HOT BREADINGS

CODE	DESCRIPTION	WEIGHT
RP56	NASHVILLE SEASONING	12.5 KG
RP57	NASHVILLE OIL SPICE	12.5 KG

## SEASONINGS

CODE	DESCRIPTION	WEIGHT
RP58	LEMON PEPPER (FOIL PACK)	1.6KG
RP59	LEMON PEPPER (TUB)	10 KG
RP60	LEMON PEPPER (TUB)	2 KG





## GRAVY AND SAUCE

CODE	DESCRIPTION	WEIGHT
RP61	MASTERCLASS BEEF & ONION GRAVY	2 KG
RP62	MASTERCLASS CHICKEN GRAVY	2 KG
RP63	MASTERCLASS VEGGIE CURRY SAUCE	4 KG
RP64	MASTERCLASS GARLIC CURRY SAUCE	4 KG
RP65	MASTERCLASS SOUTHERN FRIED GRAVY	2 KG

## BATTERS

CODE	DESCRIPTION	WEIGHT
RP66	FISHERS RESTAURANT BATTER MIX	16 KG
RP67	FISHERS LIGHTER BATTER MIX	16 KG
RP68	FISHERS NORMAL BATTER MIX	16 KG
RP69	FISHERS GOLD BATTER MIX	16 KG

## BAKERY

CODE	DESCRIPTION	WEIGHT
RP70	CLASSIC WAFFLE MIX	12.5 KG
RP71	LUXURY WAFFLE MIX	12.5 KG





# COOKING OILS & FATS

CODE	DESCRIPTION	WEIGHT
OL01	KTC VEGETABLE OIL (TIN)	1X20LTR
OL02	KTC RAPESEED OIL	1X20LTR
OL03	PREP ULTRA VEGETABLE OIL (LARGE)	1X20LTR
OL04	AVR 60 SOLID OIL	1X12.5KG
OL05	AVR 60 EXTREME	1X12.5KG





## EXTRAS

CODE	DESCRIPTION	WEIGHT
XT01	COLESLAW TUB	2KG
XT02	CRISPY FRIED ONION	400G
XT03	DRIED CHIVES	50G
XT04	DRIED PARSLEY	500G
XT05	EGGS CRATES	
XT06	GROUND CINNAMON	430G
XT07	HUMMUS 1KG	
XT08	NACHO SLICED JALAPENO	6X2.75KG
XT09	SLICED GHERKINS JARS	2.45KG
XT10	SLICES JALAPENO	3KG
XT11	WHITE SESAME SEEDS JAR	530G
XT12	TILDA EASY COOK RICE	20KG
XT13	TOMOTO PASTE TIN	4.3KG
XT14	BALSAMIC VINEGAR	5LTR
XT15	BLACK PEPPER POWDER	2KG
XT16	BLACK SESAME SEEDS JAR	550G



## DESSERTS

CODE	DESCRIPTION	WEIGHT
DST01	CHURROS	4X1KG
DST02	OREO CHEESECAKE	12 PCS
DST03	TIRAMISU KINDER	10 PCS
DST04	TIRAMISU SNICKERS	10 PCS
DST05	TIRAMISU NUTELLA	10 PCS
DST06	TIRAMISU DIAM CARAMEL	10 PCS
DST07	AMERICAN APPLE FRY PIES	48X78G
DST08	KINDER SURPRISE EGG	36X20G
DST09	LOTUS BISCOFF CRUMB	750G
DST10	LOTUS BISCOFF TOPPING SAUCE	1KG
DST11	OREO CRUMB	400G
DST12	LUXURY MILK CHOCOLATE	1KG
DST13	LUXURY WHITE CHOCOLATE	1KG
DST14	MONIN PASSIONFRUIT	70CL
DST15	KERRYMAID ANGELITO ICE CREAM MIX	12X1L



# DRINKS



CODE	DESCRIPTION	WEIGHT
DR01	PACHA STRAWBERRY	24 × 330ML
DR02	PACHA MELON	24 × 330ML
DR03	PACHA PEACH	24 × 330ML
DR04	PACHA MOJITO	24 × 330ML
DR05	PACHA LYCHEE	24 × 330ML
DR06	PACHA APPLE	24 × 330ML
DR07	7UP MOJITO	24 × 330ML
DR08	7UP EXOTIC	24 × 330ML
DR09	7UP CHERRY	24 × 330ML
DR10	JARRITOS GRAPEFRUIT	12 X 370ML
DR11	JARRITOS GUAVA	12 X 370ML
DR12	JARRITOS LIME	12 X 370ML
DR13	JARRITOS MANDARIN	12 X 370ML
DR14	JARRITOS MANGO	12 X 370ML
DR15	JARRITOS MEXICAN COLA	12 X 370ML
DR16	JARRITOS PINEAPPLE	12 X 370ML
DR17	JARRITOS STRAWBERRY	12 X 370ML
DR18	SPRITE CANS	24 X 330ML
DR19	PEPSI CANS	24 X 330ML
DR20	PEPSI MAX CANS	24 X 330ML
DR21	COKE CANS	24 X 330ML
DR22	DIET COKE CANS	24 X 330ML
DR23	FANTA FRUIT TWIST	24 X 330ML
DR24	FANTA ORANGE CANS	24 × 330ML
DR25	LIPTON LEMON ICE TEA CANS	24 × 330ML
DR26	LIPTON PEACH ICE TEA CANS	24 X 330ML
DR27	ROBINSONS FRUIT SHOOT APPLE	24 × 200ML
DR28	ROBINSONS FRUIT SHOOT ORANGE	24 X 200ML
DR29	SPARKLING WATER (GLASS BOTTLE)	24 X 330ML
DR30	STILL WATER (GLASS BOTTLE)	24 X 330ML
DR31	VOLVIC STILL WATER	24 X 330ML



# HYGIENE ESSENTIALS

CODE	DESCRIPTION	WEIGHT
HN01	SO LAZY DEGREASER	2 X5LTR
HN02	BLACK GLOVES	10 X100PCS
HN03	BLUE ROLLS	6 PCS
HN04	CATERING CLING FILM	45 X 300
HN05	ZIGZAG UTILITY LIGHTER	1.49
HN06	(2PLY & 33CM) SERVIETTES BOX	20 X100
HN07	2 PLY TOILET ROLL	4 X10
HN08	BLACK BIN LARGE SIZE	
HN09	BLEACH	2 x5L
HN10	LIMESCALE REMOVER	
HN11	FAIRY WASHING UP LIQUID LEMON	5L
HN12	FAST DRYING ANTI BACTERIAL CLEANER	1 X6
HN13	HAIR NET	100PCS
HN14	KITCHEN SPONGE SCOURERS	1 X10
HN15	LIDER SPONGE SCOURERS	1 X10
HN16	WOODEN FORK	10 x100



# PACKAGING

CODE	DESCRIPTION	QTY/BOX
PK01	40Z SINGLE WALL COFFEE CUP (WHITE) (1000PK]	1000 PCS
PK02	40Z SINGLE WALL COFFEE CUP (WHITE) (1000PK]	1000 PCS
PK03	70Z SINGLE WALL COLD DRINK CUP (SQUAT) (WHITE)	1000 PCS
PK04	80Z SINGLE WALL COFFEE CUP (WHITE)	1000 PCS
PK05	80Z SINGLE WALL COFFEE CUP (SIGNATURE)	1000 PCS
PK06	120Z SINGLE WALL COFFEE CUP (WHITE)	1000 PCS
PK07	120Z SINGLE WALL COFFEE CUP (SIGNATURE)	1000 PCS
PK08	160Z SINGLE WALL COFFEE CUP (WHITE)	1000 PCS
PK09	160Z SINGLE WALL COFFEE CUP (SIGNATURE)	1000 PCS
PK10	80Z DOUBLE WALL COFFEE CUP (BLACK)	500 PCS
PK11	80Z DOUBLE WALL COFFEE CUP (BLACK)	500 PCS
PK12	80Z DOUBLE WALL COFFEE CUP (KRAFT)	500 PCS
PK13	80Z DOUBLE WALL COFFEE CUP (KRAFT)	500 PCS
PK14	80Z DOUBLE WALL COFFEE CUP (MATT) (SIGNATURE)	500 PCS
PK15	120Z DOUBLE WALL COFFEE CUP (MATT) (BLACK)	500 PCS
PK16	120Z DOUBLE WALL COFFEE CUP (BLACK)	500 PCS
PK17	120Z DOUBLE WALL COFFEE CUP (MATT) (KRAFT)	500 PCS
PK18	120Z DOUBLE WALL COFFEE CUP (KRAFT)	500 PCS
PK19	120Z DOUBLE WALL COFFEE CUP (MATT) (SIGNATURE)	500 PCS
PK20	160Z DOUBLE WALL COFFEE CUP (MATT)(BLACK]	500 PCS
PK21	160Z DOUBLE WALL COFFEE CUP (BLACK)	500 PCS
PK22	160Z DOUBLE WALL COFFEE CUP (KRAFT)	500 PCS



CODE	DESCRIPTION	QTY/BOX
PK23	40Z RIPPLE COFFEE CUP (BLACK)	1000
PK24	40Z RIPPLE COFFEE CUP (KRAFT)	1000
PK25	40Z RIPPLE COFFEE CUP (KRAFT)	1000
PK26	40Z RIPPLE COFFEE CUP (VIP)	1000
PK27	80Z RIPPLE COFFEE CUP (BLACK)	500
PK28	80Z RIPPLE COFFEE CUP (BLACK]	500
PK29	80Z RIPPLE COFFEE CUP (BLACK)	500
PK30	80Z RIPPLE COFFEE CUP (BLACK]	500
PK31	80Z RIPPLE COFFEE CUP (KRAFT)	500
PK32	80Z RIPPLE COFFEE CUP (KRAFT)	500
PK33	80Z RIPPLE COFFEE CUP (KRAFT)	500
PK34	80Z RIPPLE COFFEE CUP (KRAFT)	500
PK35	80Z RIPPLE COFFEE CUP (VIP]	500
PK36	120Z RIPPLE COFFEE CUP (BLACK)	500
PK37	120Z RIPPLE COFFEE CUP (BLACK)	500
PK38	120Z RIPPLE COFFEE CUP (BLACK)	500
PK39	120Z RIPPLE COFFEE CUP (BLACK]	500
PK40	120Z RIPPLE COFFEE CUP (KRAFT)	500
PK41	120Z RIPPLE COFFEE CUP (KRAFT)	500
PK42	120Z RIPPLE COFFEE CUP (VIP)	500
PK43	160Z RIPPLE COFFEE CUP (BLACK)	500
PK44	160Z RIPPLE COFFEE CUP (BLACK)	500
PK45	160Z RIPPLE COFFEE CUP (BLACK)	500
PK46	160Z RIPPLE COFFEE CUP (KRAFT)	500
PK47	160Z RIPPLE COFFEE CUP (KRAFT)	500
PK48	160Z RIPPLE COFFEE CUP (KRAFT)	500
PK49	160Z RIPPLE COFFEE CUP (VIP)	500

## CUSTOM PACKAGING

CODE	DESCRIPTION	QTY/BOX
CP27	80Z DOUBLE WALL CUP	500
CP28	80Z CUP LID + TAB	500
CP29	120Z DOUBLE WALL CUP	500
CP30	120Z LID + TAB	500
CP31	12 OZ PET LOGO CUP	500
CP32	16 OZ PET LOGO CUP	500
CP33	DOME LIDS	500
CP34	16 OZ DRINKING LOGO CUP	1000
CP35	22 OZ DRINKING LOGO CUP	1000
CP36	DRINKING CUP LIDS	1000
CP37	LOGO CHIPS SCOOP SMALL	500
CP38	LOGO CHIPS SCOOP MEDIUM	500
CP39	LOGO CHIPS SCOOP LARGE	500
CP40	LOGO FOOD LINED TRAY PAPER 30CMX20CM	1000
CP41	LOGO FOOD LINED BURGER WRAP 30X30CM	1000
CP42	LOGO FOIL BURGER HOT WRAP 30X30CM	1000
CP43	KIDS D1	1000
CP44	SMALL LOGO GRAB BAG D2	1000
CP45	MEDIUM LOGO GRAB BAG D3	1000
CP46	LARGE LOGO GRAB BAG D4	1000
CP47	XL LOGO GRAB BAG D5	1000
CP48	XL LOGO GRAB D6	1000
CP49	KIDS HANDLE D1	1000
CP50	SMALL LOGO HANDLE BAG D2	1000
CP51	MEDIUM LOGO HANDLE BAG D3	1000
CP52	LARGE LOGO HANDLE BAG D4	1000



Buy  
Quality  
Build  
Trust

# STEAKBOX LIMITED

Unit 6, Thornham Grove, Stratford, London, E15 1DN

+44 7886 184442 +44 7359 211741

[www.steakboxfoodservice.co.uk](http://www.steakboxfoodservice.co.uk) [admin@steakboxfoodservice.co.uk](mailto:admin@steakboxfoodservice.co.uk)